

## Using the Terminal Server, Mariner

A terminal server is best thought of as turning your home computer into a remote keyboard and mouse connected to a computer in the CITE Lab itself. When you log into Mariner from home or off-campus, the computer in front of you transforms, virtually, into a computer in the CITE Lab. You will have access to many of the specialized software packages in the Lab (such as Photoshop Elements or SPSS) as well as your X: drive and roaming profile.

Connecting to Mariner requires some special operating system prerequisites. In order to connect to Mariner, you must be running one of the following two operating systems:

- Microsoft Windows 2000 Professional
- Microsoft Windows XP Professional

Please note that Microsoft Windows XP Professional is *not* the same operating system as Microsoft Windows XP Home. Many computers initially purchased for home use come preinstalled with XP Home. While you technically are able to connect to Mariner with Windows XP Home, Microsoft's licensing requires us to lock out any non-Professional accounts after ninety days.

Additionally, Mariner provides limited support for Macintosh connections. Like Windows XP Home users, a Macintosh may be granted a ninety-day temporary license to connect to Mariner.

College of Education students are eligible to purchase Microsoft Windows XP Professional at a reduced price in order to upgrade their home computer. The CD is available at CougarByte and more information can be found at <http://www.uh.edu/software>. If you purchase the XP Professional upgrade CD from CougarByte, you may request technical support for upgrading your computer from the University of Houston Help Desk at 713-743-1411 between the hours of 8:00 am and 8:00 pm.

### ***Connecting to Mariner***

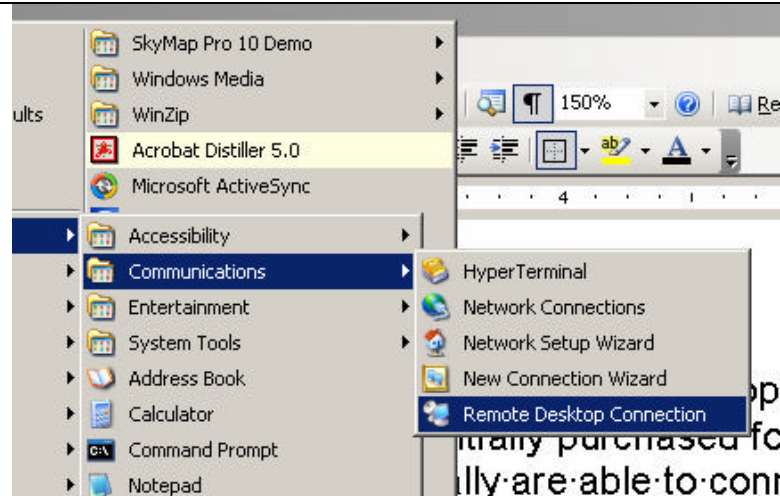
A software application called **Remote Desktop Connection (RDC)** is used to connect your computer to Mariner, the terminal server. **RDC** is built into Windows XP Professional, but must be downloaded and installed if you are using Windows 2000 Professional. To download **RDC** from Microsoft, use the following link:

<http://download.microsoft.com/download/whistler/tools/1.0/wxp/en-us/msrdpcli.exe>

The Macintosh RDC client is available from:

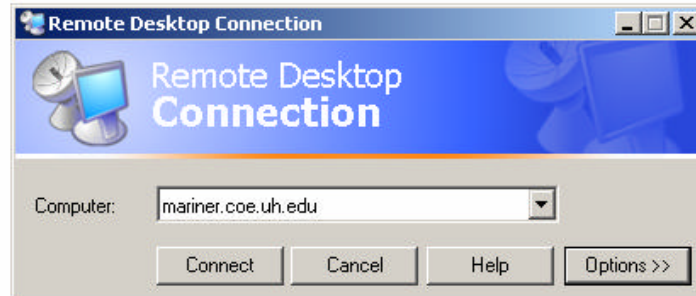
<http://www.microsoft.com/mac/otherproducts/otherproducts.aspx?pid=remotedesktopclient>

To run **Remote Desktop Connection**, click on your **Start Menu**, then **All Programs**, then **Accessories**, then **Communications**, and finally, **Remote Desktop Connection**.



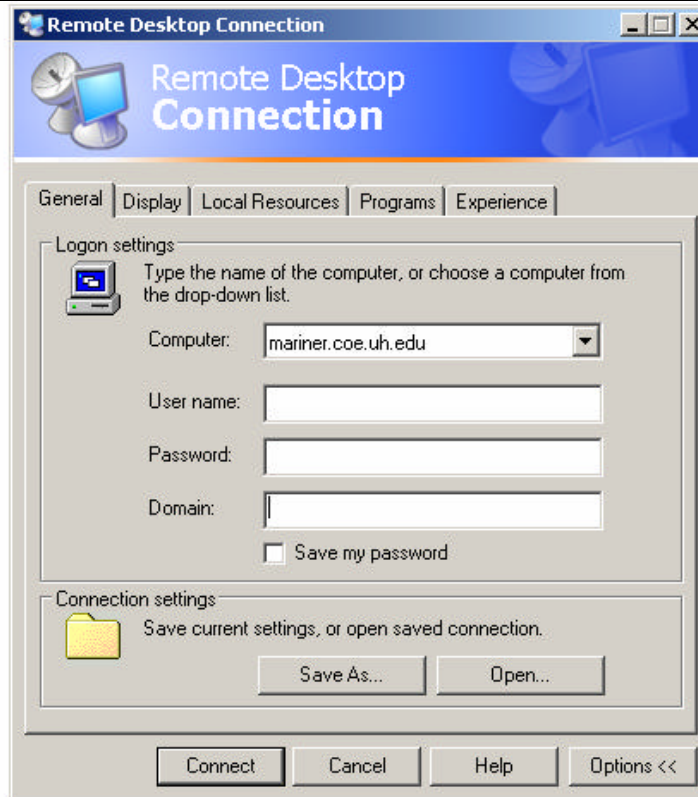
The small **RDC** window will appear, looking similar to what is shown at the right.

Inside the **Computer** box, type in `mariner.coe.uh.edu`

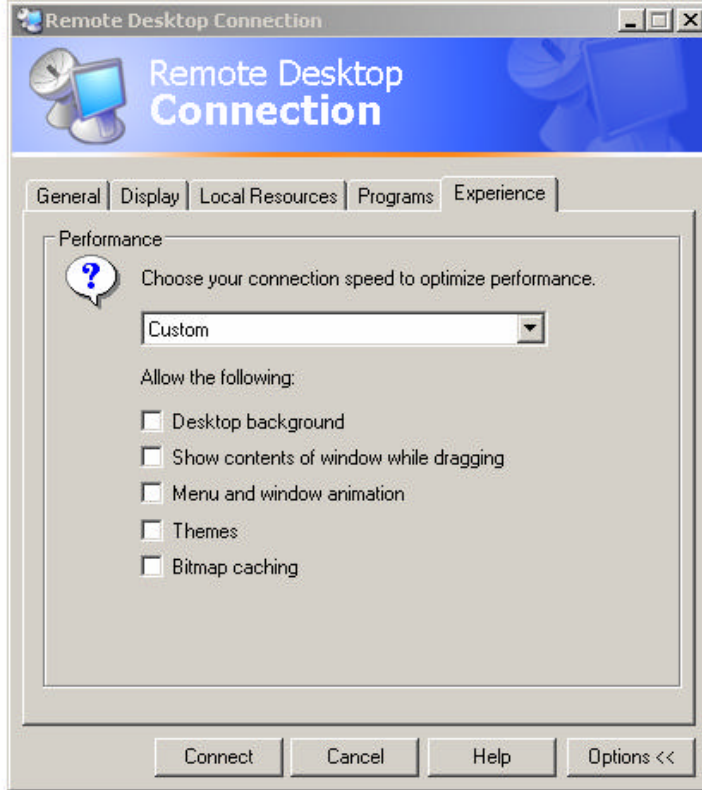


To optimize your connection in order to get the best performance, you may need to modify some of the default settings. Click the **Options** button in the **RDC** dialog box. The box will expand look similar to what is shown at the right.

Click on the **Experience** tab near the top of the window.

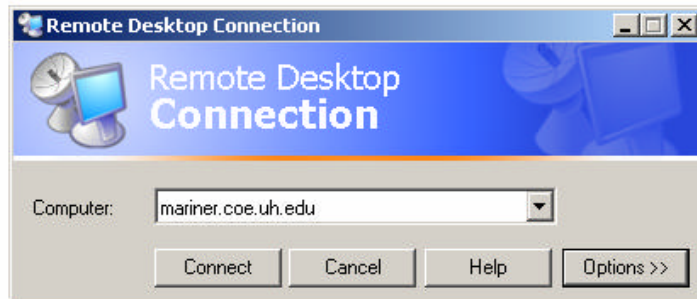


For best performance, uncheck all of the checkboxes on this screen. If you are familiar with Windows and networking, feel free to leave some of them on that your connection speed would support.



Finally, click the **Options** button again to return to the smaller window display as before.


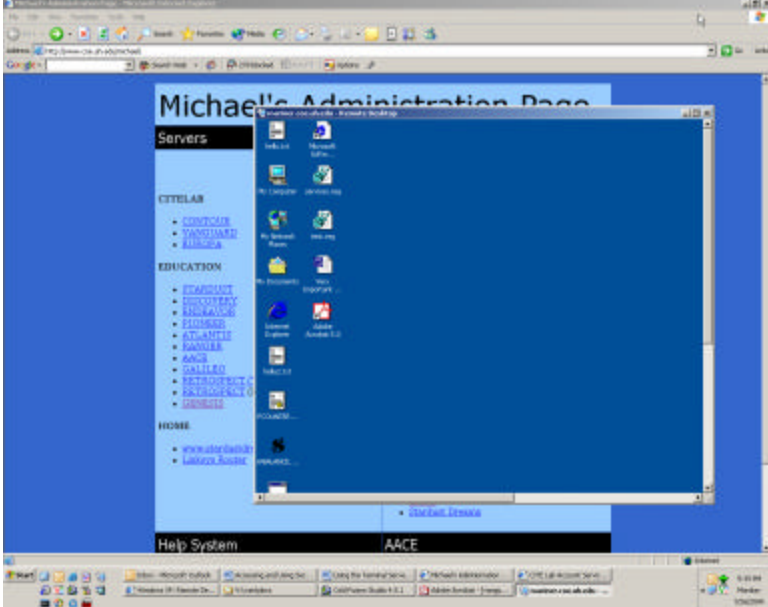
Click **Connect** to establish a connection to Mariner.





## Switching Between Local and Remote Modes

Working with programs and data files on your own computer is called *working locally*. Conversely, working with programs and data files on Mariner is known as *working remotely*. It is very easy to switch between Mariner and your local computer.

<p>When you are connected to Mariner, hover your mouse cursor near the top of your screen. A yellow bar will appear as shown to the right. On the right side of this bar are three icons, <b>Minimize</b>, <b>Restore</b>, and <b>Disconnect</b>.</p>	
<p>Clicking <b>Minimize</b> will minimize your RDC session to your local computer's taskbar. <b>Restore</b> will shrink the RDC window (as shown to the right) so that it overlays other windows and programs on your local computer. Click the <b>Restore</b> button again to maximize the RDC session.</p>	

## Transferring Files between Your Local Computer and Mariner

Regrettably, transferring files between your local computer and Mariner is somewhat tricky. Ideally, it would be great to just drag and drop files between your local desktop and your Mariner desktop. Unfortunately, this doesn't work well with the version of Terminal Services the CITE Lab is currently running.

Instead, the workaround is to use Viking (i.e. your X: drive) as an intermediate location. If you would like to transfer files from your local computer to Mariner, you will need to use the [Secure Shell \(SSH\) application](#), to transfer the files first to Viking, then use Mariner to copy them from your X: drive to their final location.

## ***The Importance of Logging Off***

Just as when you use the computers in the CITE Lab, logging off when you are finished using Mariner is critical to ensure that your files are saved properly. When working on Mariner, just as in the CITE lab, your files exist in a temporary location on the hard drive. Your files aren't written back to your permanent storage space (i.e. roaming profile) until you log off.

It may be tempting to "log off" by just clicking the Disconnect button (the X that appears when you hover your mouse button at the top of your screen.) *Disconnecting does not log you off!* Disconnecting simply suspends your session, allowing you to come back to it up to two hours later, exactly where you left off. Disconnecting does not write your data back to your permanent storage area. Only choosing **Log Off** from the **Start Menu** will do this and correctly retain your data.

### **Final Notes**

If you have any problems or questions, please do not hesitate to contact the CITE Lab Staff at 713-743-9833 or [mdrapp@uh.edu](mailto:mdrapp@uh.edu).